

Quick Start

Introduction

This CD-ROM package contains:

- This *Quick Start*: It helps you to install quickly the software and to start working with HIWARE development tools.
- The complete HIWARE development tools chain, i.e. Macro Assemblers, Compilers, Linkers, Decoders, Simulators, Debuggers and more!
- A *Demo Guide* for each CPU family and interactive tutorials (*show me how*).
- All related HIWARE manuals for each CPU family and release notes delivered in *Portable Document Format (PDF)*.
- A powerful interactive CD browser to lead you through installations, documents preview and interactive tutorials.

System Requirements

- PC - 486/66 MHz processor (Pentium or equivalent recommended)
- 32 MByte of RAM (48 Mbyte recommended)
- 256 colour 640x480 display (1024x768 recommended)
- Windows 95/98 or NT 4.0 (Workstation or Server version) or higher.
- 2X CD-ROM drive (4X recommended)
- 14 Mbyte minimum (executables only) up to 84 Mbytes (with all libraries, demos and documents) of hard disk space.

Licensing and Limitations

You can contact us right now at email: license@hiware.com or at phone: (512) 282 4435 (USA) or +41 61 690 75 00 (international) to ask for a **free! 30 days evaluation license to run all our tools in full version mode**. Please see also at the end of this booklet for more contact info.

Without any license, the tools run in limited demo mode. Limitations for the different tools are given below:

Compiler

- Maximum number of 10 functions for a source file.
- Maximum code size for a source file: 1kB for 8/16Bit and 3kB for 32Bit CPUs.

Assembler

- Maximum number of 8 assembler sections.
- Code size limited to 800 bytes.

Linker

The size of the generated .abs file is limited to 1024 Bytes of code.

Debugger

The maximum code size that can be loaded is limited to 1024 bytes of code.

Installation



The installation program will automatically run as soon as you load the CD-ROM into the CD-ROM drive, if the “CD AutoPlay” facility of your Windows environment is activated (default case).

If “CD AutoPlay” is not active, run the `install.exe` file which is on the CD-ROM.

Within the HIWARE toolkit dialog, select *installations* to start installing, or *show me how* to enter the interactive tutorial.

Compile - Link - Debug

Follow these steps to compile, link and debug the `fibonacci.c` example. This will take you about 5 minutes:

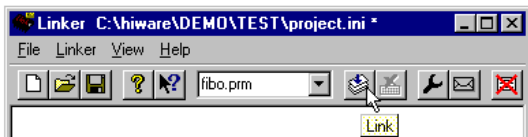
1. Open the desired HIWARE CPU  Demo Projects folder then double-click on  Simulator Project to open the *HIWARE TOOLS* shell on the Simulator demo project.




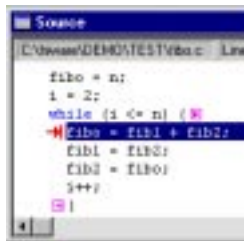
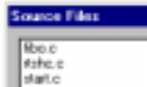
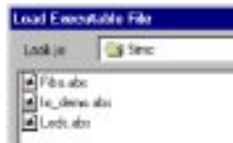
2. Click the *Compiler* button on the tool bar.
3. Compile the fibo program: type `fibonacci.c` in the edit box and click the “Compile” button.



4. Choose *File / Exit* to close the *Compiler*.
5. Click the *Linker* button on the tool bar.
6. Link the fibo program: type `fibonacci.prm` in the edit box and click the “Link” button.



7. Choose *File / Exit* to close the *Linker*.
8. Click the *Debugger* button in the *HIWARE TOOLS* tool bar.
9. Select menu entry *Simulator / Load* to open the *Load Executable File* dialog. Load the `fib0.abs` file.
10. Point to the *Source* component and press the right mouse button. A pop up menu is displayed. Select *Open Source File...*. The *Source Files* dialog is displayed.
11. Double-Click on `fib0.c` to open the `fib0.c` file. The application source file is displayed in the *Source* component.
12. Point to a C statement in the *Source* component and press the right mouse button. In the pop up menu select *Set Breakpoint*. A breakpoint is set on the corresponding C statement.
13. Run the application clicking  in the toolbar. The application runs until the breakpoint is encountered.
14. Close *HI-WAVE*. Finished!



Note: For further details on each of the above mentioned steps or how to automatize it (e.g. using a make file or working together with editors), please refer to the Demo Guide or the Manuals which are available in Portable Document Format (PDF) in directory: C:\HIWARE\DOCU For benchmarks, please ask for the latest full version.

For further information, please contact:

HIWARE Inc., USA:

8608 Barasinga Trail, Austin, TX 78749, Phone (512) 282 4435 - Fax (512) 282 4487

HIWARE France:

1 rue de la Haye le dôme, BP 10910, 95731 Roissy CDG - Phone +33 1 4151 1972 - Fax +33 1 4151 1973

HIWARE AG, Switzerland:

Riehenring 175, 4058 Basel, Phone +41 61 690 75 00 - Fax +41 61 690 75 01

Email: info@hiware.com

WWW: <http://www.hiware.com>